

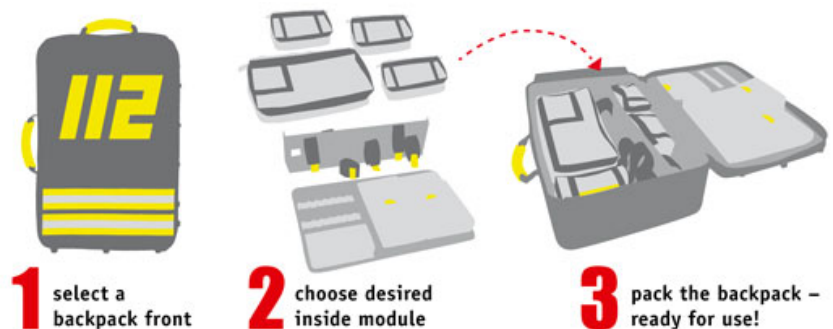


rescue-tec Material and Equipment Backpack, 5-colour camo print (German Army) acc. to TL

Order number: SP-01113

The rescue-tec backpacks facilitate the transport of tools to operations. They replace boxes and cases because these are not necessarily physically and gentle on the joints to move. A backpack is the ideal solution here, to facilitate the transport of goods. Especially in the area of staircases, exits, ladders or ladder stairs hands remain free.

The backpack is inside equipped with differently arranged Velcro strips, thus the backpack can be set up individually. For different loads with a DIN tool set, we offer inside module sets, such as for door opening, chimney tool, accident tool set, ...



The inside unit made of ABS plastic gives necessary stability to the backpack and protects the contents. The backpack exterior features robust Cordura, and the interior is made of easy-to clean PVC-coated fabrics.

The sophisticated suspension system allows the carrying as a backpack, as well as use as a pocket. The shoulder straps are stowed in a compartment, so a comfortable accommodation in a standard compartment of the vehicle.

It is possible to store operating instructions, parts lists and similar in the top pocket it so they are close at hand.

In this version the backpack solution has been omitted on a large label. But on the front side, a fleece strip is attached for a reflective shield (300 x 50 mm) which allows individual



identification.

(without contents and without inside module)

material outside: Cordura 1100dtex acc. To TL 8305-0278/A2,
printed acc. To TL 8305-0290 (German Army)

material inside: PA 6.6 235 dtex acc. To TL 8305-0278/E1, uni
stone gray oliv

webbing: Polyamid/Polyester, printed acc. To TL (German
Army)

dimensions: 56 x 37 x 21 cm

volume: 35 l

weight: 3.2 kg